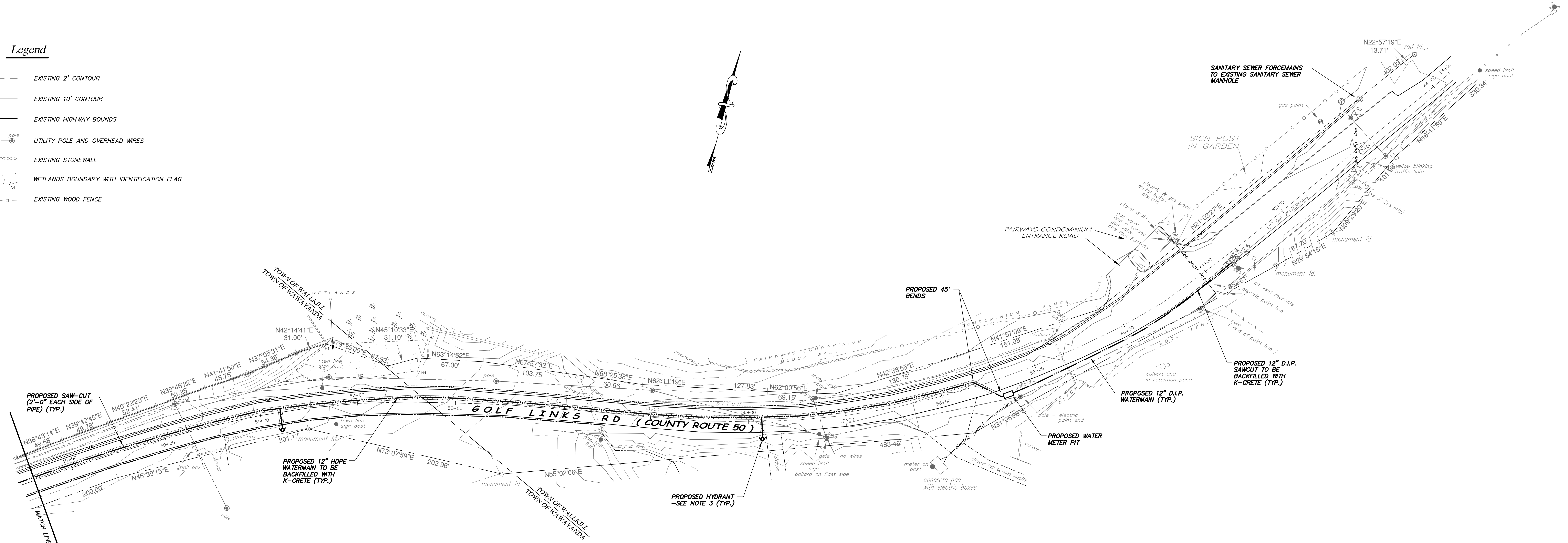
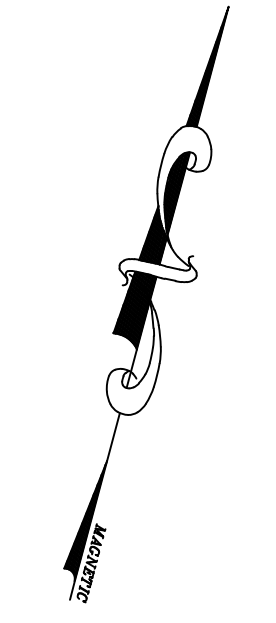
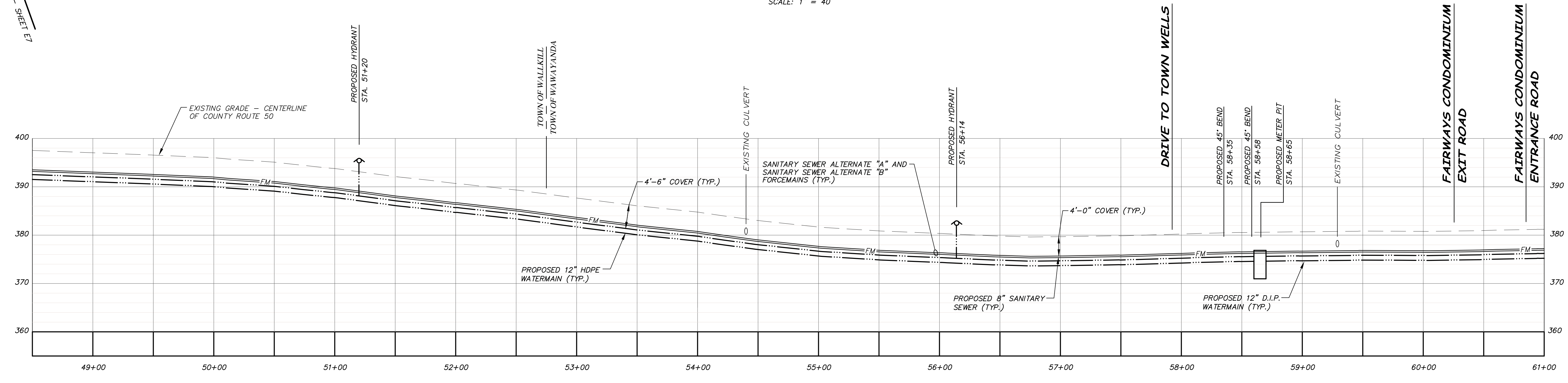


Legend

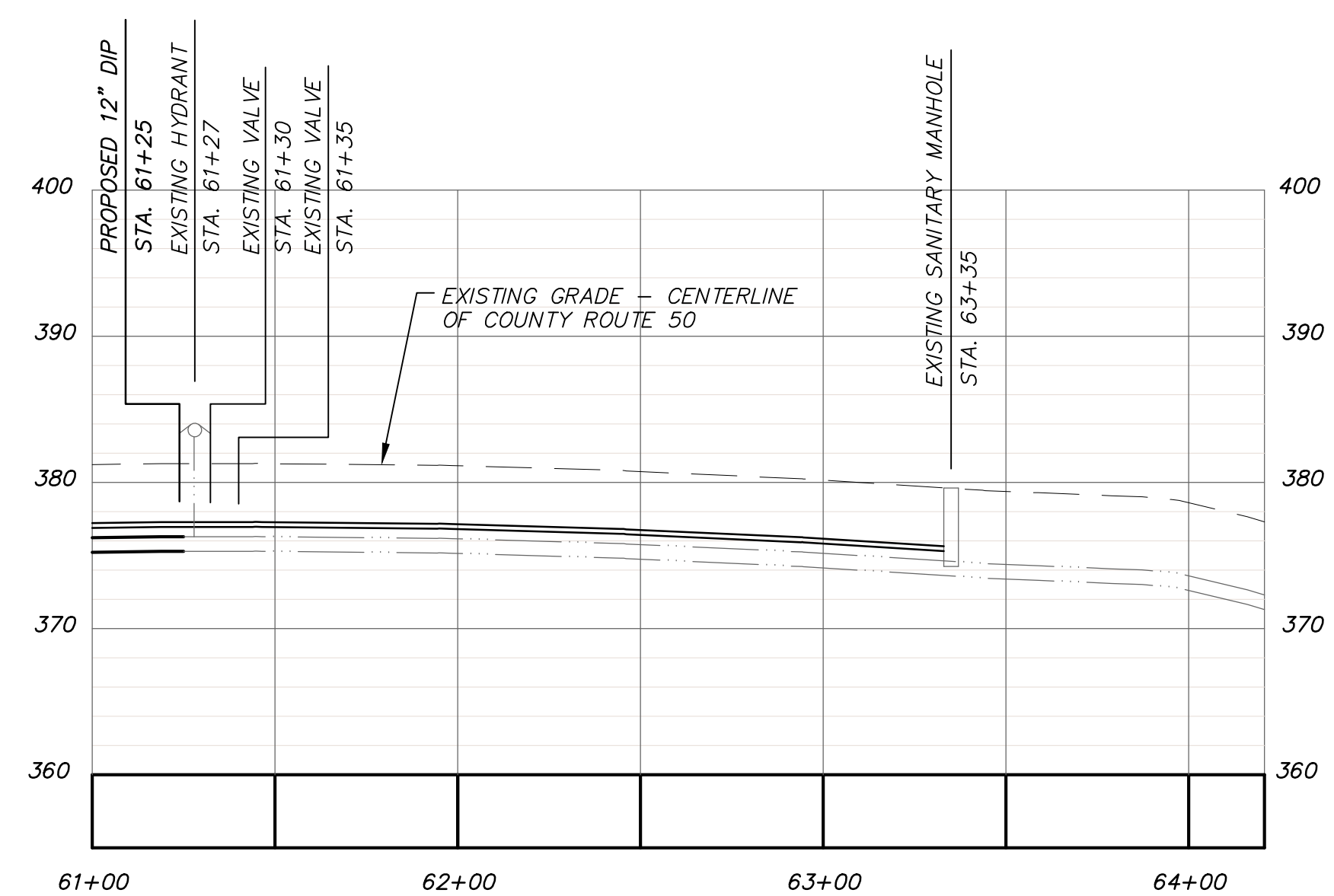
- EXISTING 2' CONTOUR
- EXISTING 10' CONTOUR
- EXISTING HIGHWAY BOUNDS
- UTILITY POLE AND OVERHEAD WIRES
- EXISTING STONEWALL
- WETLANDS BOUNDARY WITH IDENTIFICATION FLAG
- EXISTING WOOD FENCE



County Route 50 - Site Plan 48+50 to 64+20
SCALE: 1" = 40'



County Route 50 - Centerline Profile 48+50 to 61+00
SCALE: HORIZONTAL 1" = 40'
VERTICAL 1" = 4'

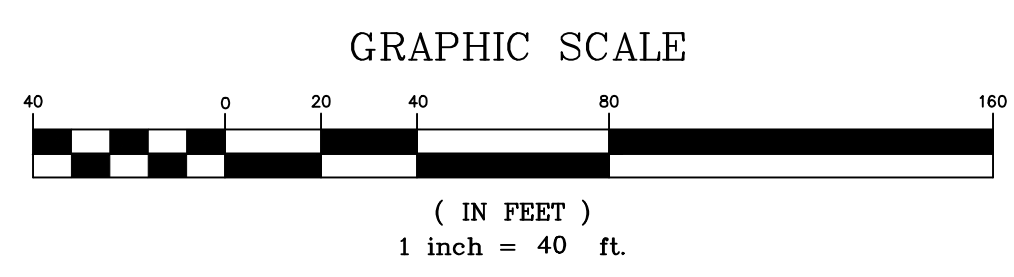


County Route 50 - Centerline Profile 61+00 to 64+20
SCALE: HORIZONTAL 1" = 40'
VERTICAL 1" = 4'

NOTES

1. PRIOR TO FINAL DESIGN, AN UNDERGROUND SURVEY OF THE GAS MAIN ON THE SOUTH SIDE OF COUNTY ROUTE 50 SHALL BE UNDERTAKEN.
2. UNDERGROUND UTILITIES SHOWN ON THIS PLAN WERE DERIVED FROM EXISTING MAPPING AND DO NOT REFLECT THE RESULTS OF ACTUAL FIELD SURVEY. THIS PLAN IS FOR REVIEW PURPOSES ONLY AND NOT INTENDED FOR UNDERGROUND INVESTIGATIONS SUCH AS BORINGS / TEST PITS, OR CONSTRUCTION.
3. WATER HYDRANT LOCATIONS TO BE DETERMINED AFTER MARKOUT OF EXISTING GAS MAIN.
4. THESE PLANS PRESENT TWO ALTERNATES FOR WASTEWATER DISPOSAL: ALTERNATE A: A PRIVATE PUMP STATION OWNED AND MAINTAINED BY THE PROJECT SPONSOR WILL TRANSMIT WASTEWATER FROM THE PROJECT VIA FORCE MAIN TO THE TOWN OF WALKILL COLLECTION SYSTEM. ALTERNATE B: THE PROJECT SPONSOR WILL CONSTRUCT A GRAVITY SEWER ON COUNTY ROUTE 50 TO THE MONHEGAN BROOK. WASTEWATER WILL BE TRANSMITTED VIA FORCE MAIN TO THE TOWN OF WALKILL COLLECTION SYSTEM. UPON COMPLETION, AN OFFER OF DEDICATION WILL BE MADE TO THE TOWN OF WAWAYANDA, TO FACILITATE CREATION OF A TOWN SEWER DISTRICT.
5. WASTE SYSTEM IMPROVEMENTS SHOWN ON THESE PLANS SHALL BE CONSTRUCTION BY THE PROJECT SPONSOR AND AN OFFER OF DEDICATION MADE TO THE TOWN OF WAWAYANDA.

NOTES:
THE PLANS AND DETAILS CONTAINED IN THIS SET ARE THE PROPERTY OF ALPINE ENVIRONMENTAL CONSULTANTS AND SHALL NOT BE REPRODUCED, COPIED, REPRODUCED, OR TRANSMITTED IN ANY FORM OR BY ANY MEANS, ELECTRONIC OR MECHANICAL, INCLUDING PHOTOCOPYING, RECORDING, OR BY ANY INFORMATION STORAGE AND RETRIEVAL SYSTEM, WITHOUT THE WRITTEN PERMISSION OF ALPINE ENVIRONMENTAL CONSULTANTS.
BY SIGNING THIS PLAN FOR REVIEW, THE APPLICANT AGREES TO HOLD ALPINE ENVIRONMENTAL CONSULTANTS HARMLESS FROM AND AGAINST ALL CLAIMS, DAMAGES, LOSSES AND EXPENSES, INCLUDING REASONABLE ATTORNEY'S FEES, THAT MAY BE ASSERTED AGAINST ALPINE ENVIRONMENTAL CONSULTANTS BY ANY THIRD PARTY AS A RESULT OF THE REVIEW OF THESE PLANS.
THE PLANS AND DETAILS CONTAINED IN THIS SET ARE THE PROPERTY OF ALPINE ENVIRONMENTAL CONSULTANTS AND SHALL NOT BE REPRODUCED, COPIED, REPRODUCED, OR TRANSMITTED IN ANY FORM OR BY ANY MEANS, ELECTRONIC OR MECHANICAL, INCLUDING PHOTOCOPYING, RECORDING, OR BY ANY INFORMATION STORAGE AND RETRIEVAL SYSTEM, WITHOUT THE WRITTEN PERMISSION OF ALPINE ENVIRONMENTAL CONSULTANTS.
BY SIGNING THIS PLAN FOR REVIEW, THE APPLICANT AGREES TO HOLD ALPINE ENVIRONMENTAL CONSULTANTS HARMLESS FROM AND AGAINST ALL CLAIMS, DAMAGES, LOSSES AND EXPENSES, INCLUDING REASONABLE ATTORNEY'S FEES, THAT MAY BE ASSERTED AGAINST ALPINE ENVIRONMENTAL CONSULTANTS BY ANY THIRD PARTY AS A RESULT OF THE REVIEW OF THESE PLANS.
THE PLANS AND DETAILS CONTAINED IN THIS SET ARE THE PROPERTY OF ALPINE ENVIRONMENTAL CONSULTANTS AND SHALL NOT BE REPRODUCED, COPIED, REPRODUCED, OR TRANSMITTED IN ANY FORM OR BY ANY MEANS, ELECTRONIC OR MECHANICAL, INCLUDING PHOTOCOPYING, RECORDING, OR BY ANY INFORMATION STORAGE AND RETRIEVAL SYSTEM, WITHOUT THE WRITTEN PERMISSION OF ALPINE ENVIRONMENTAL CONSULTANTS.
BY SIGNING THIS PLAN FOR REVIEW, THE APPLICANT AGREES TO HOLD ALPINE ENVIRONMENTAL CONSULTANTS HARMLESS FROM AND AGAINST ALL CLAIMS, DAMAGES, LOSSES AND EXPENSES, INCLUDING REASONABLE ATTORNEY'S FEES, THAT MAY BE ASSERTED AGAINST ALPINE ENVIRONMENTAL CONSULTANTS BY ANY THIRD PARTY AS A RESULT OF THE REVIEW OF THESE PLANS.



KENT FARM
SECT. 1, BLOCK 1, LOT 38.1
TOWN OF WAWAYANDA
ORANGE COUNTY, NEW YORK

**County Route 50
Plan & Profile - Section 4**

P.O. BOX 145
MONTGOMERY, NEW YORK 12549

JOHN PETROCCIONE P.E.
LICENSE NO. 078616
129 NEPTUNE DRIVE, MONROE, NEW YORK 10950
(845) 782-7725

DATE	DESCRIPTION
2/2/13	PRELIMINARY PLANS

SCALE	PROJECT	CAD REFERENCE
1" = 40'	0990	89-SECTION 4DWG
NYSDEC DWG.NO	OCHD DWG.NO	DWG.NO
N/A of N/A	N/A of N/A	EB